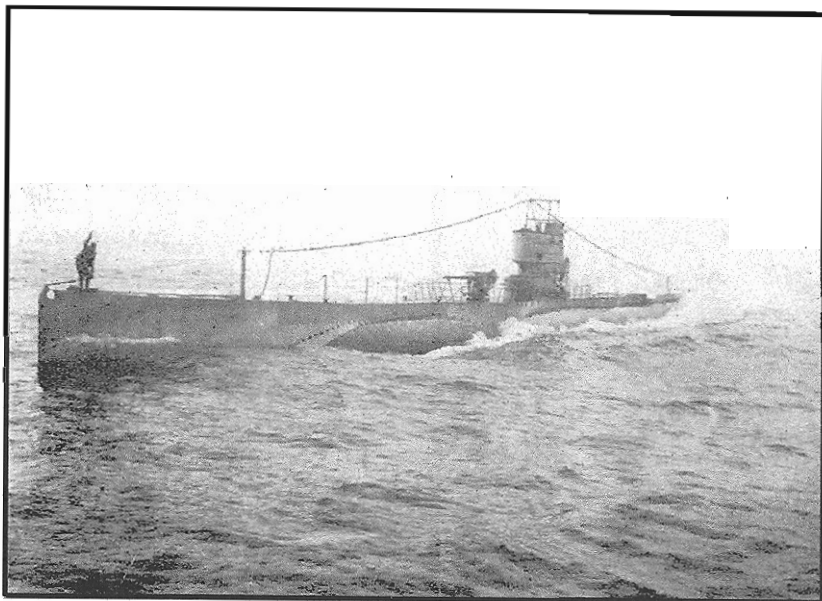

SUBMARINE S-49

Formerly of the U. S. Navy



Submarine S-49 while in U. S. Naval Service

STRONG NAVY ★ STRONG NATION

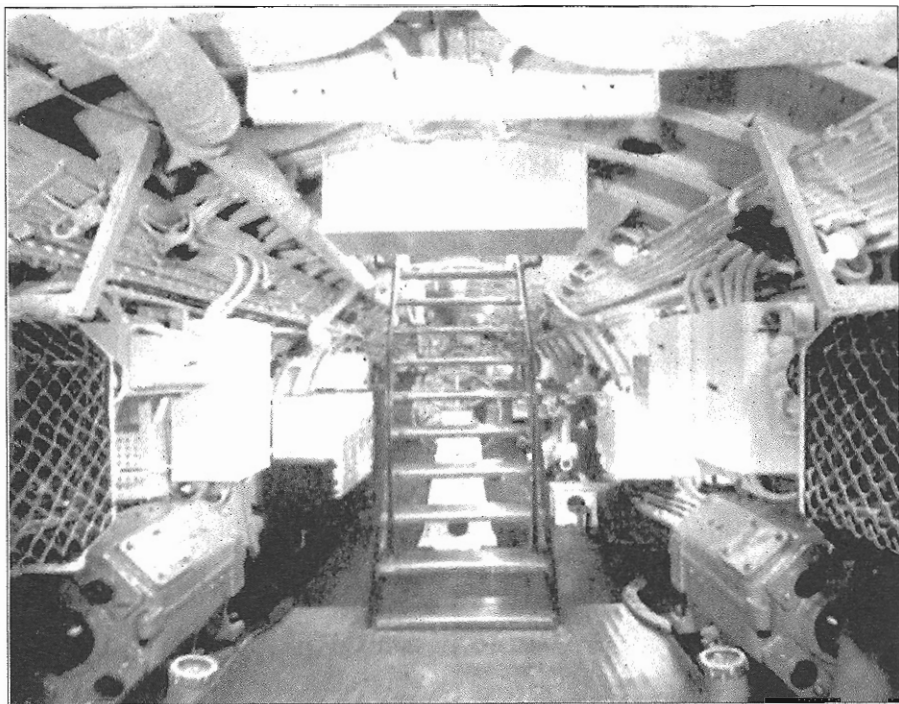
HISTORY OF SUBMARINE S-49

Submarine S-49 was built for the United States Navy by the Lake Torpedo Boat Company, of Bridgeport, Conn. It was commissioned June 5, 1922. It is 240 feet long and had a displacement of 1,000 tons. The contract price of the S-49, including special equipment, was about \$2,500,000.00. It remained in the United States Navy until May, 1931, when it was sold because of the London Naval Treaty which called for the reduction of the navies of various countries. Since 1931 the S-49 has been used as an educational exhibit, giving to millions of people an opportunity of seeing and inspecting a submarine. It has brought to thousands of people a better appreciation of their Navy. After viewing the intricate workings of the S-49 anyone must realize that only men of the highest ability would be competent to operate such boats. Also the reason for high Naval appropriations is apparent for the construction of such ships. Remember, if you help to preserve your Navy's strength in time of peace, it will protect you in time of war.

NOTICE

Submarine S-49 is owned and exhibited by Capt. F. J. Chrestensen
and has no connection in any way with the
United States Navy

MOTOR ROOM --- SUBMARINE S-49



The motor room of the S-49 is in the stern of the boat and has located under the deck two 750 horse-power motor generators which are used to operate the boat when running submerged and also to generate power to recharge the batteries. The motors will run the boat at a speed of about 10 miles per hour.

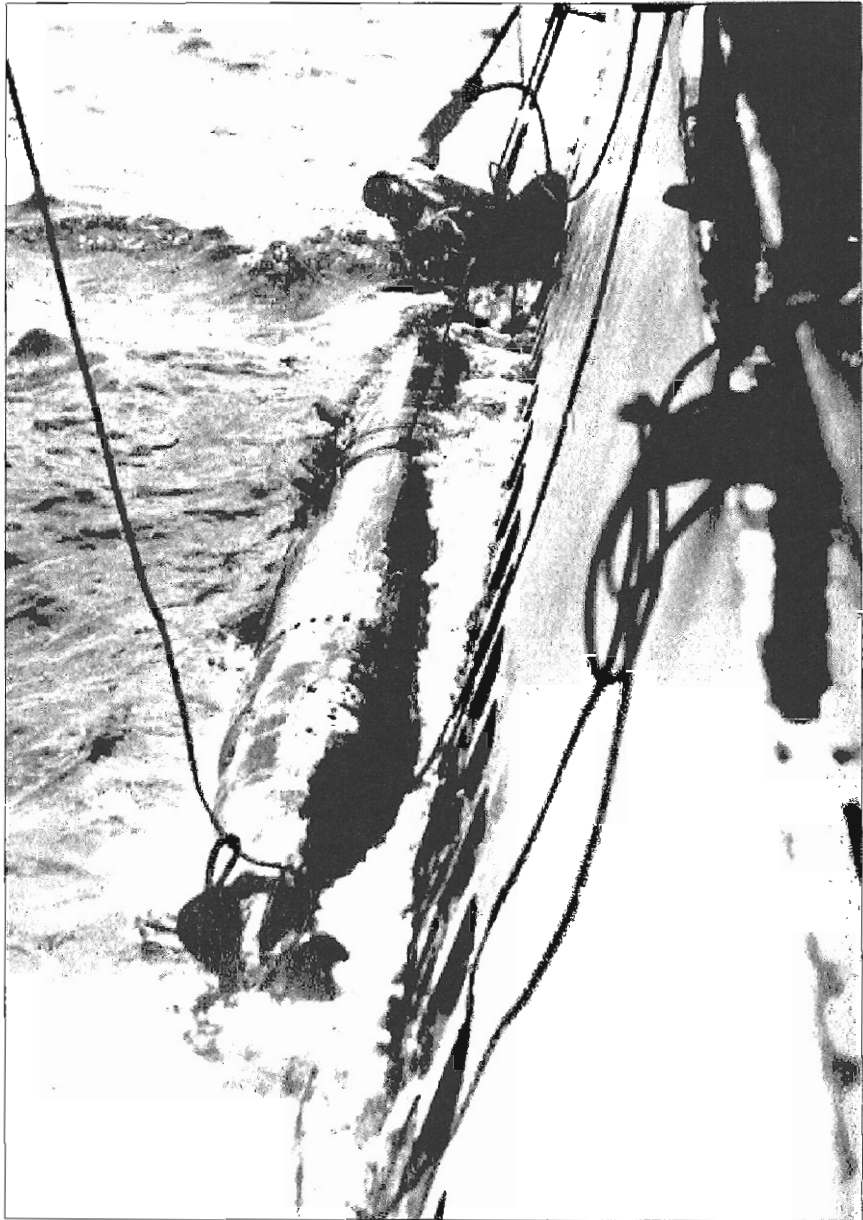
In this compartment there is also one torpedo tube, the work shop for any repairs necessary at sea and the emergency steering control.

The stairway in this compartment and also in the torpedo room were put in for exhibition purposes where originally there were watertight hatches for loading torpedoes into the boat.

Put your trust in your own strength and no one can betray you.

Always have a navy equal to the best ready for the test.

TORPEDO



Torpedo alongside submarine after being fired during target practice.

TORPEDOED SHIP



Ship shortly after being torpedoed, littering the sea with her cargo.

